



DATA FROM SKY

What if there was a tool to evaluate safety, capacity and efficiency of an intersection? What if such a tool could predict accidents before they happen? We develop exactly that tool and it is called DataFromSky.

1 250 000
518 billion \$
200 billion €

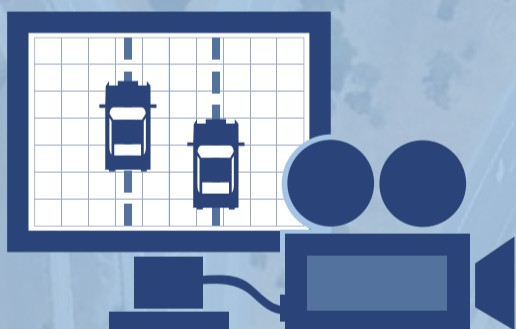
Traffic accidents are a serious problem. Every year, one and a quarter million people die. The financial loss associated with traffic-related injuries and deaths is 200 mld. EUR in the European Union alone. Worldwide, it is estimated that these costs reach 518 billion USD.



Data collection is performed by external partners operating drones / UAVs commercially in the target areas.



The output is distributed back to the client together with a software to further analyze and interpret the results - DataFromSky Viewer.



The recorded videos are automatically analyzed by the Extractor tool developed by DataFromSky. It is used to extract trajectories and classifications.



We modify the software according to clients' demand for new functions. If the client requests inclusion of a report in the outputs, we

arrange for an interpretation of the data by our partners - traffic analysts and university scientists.